

Managing the costs.

We accept Medicare and Medicaid and we also bill private insurance directly. As a local nonprofit healthcare agency, our generous Community sometimes provides resources to assist uninsured and under-insured hospice patients.

Getting started.

Hospice services require a referral from a medical provider. Ask your primary care provider for a referral to Community Hospice.

Call for information.
877.541.4108

“Mother was kept out of pain and comfortable during her stay. She was able to pass in peace and most of all, comfort.”

Longview
1035 11th Avenue
Longview, WA 98632

Vancouver
3102 NE 134th Street
Vancouver, WA 98686

Community Hospice is a service of Community Home Health & Hospice serving Washington and Oregon families since 1977.



**Comfort close
to home.**



Rest easy.

Our highly-trained specialists can care for even the most complex cases. A team of physicians, nurse practitioners, nurses, medical social workers, spiritual counselors, aides and trained volunteers will provide expert care so your loved one can rest easy.

Hospice is a family affair.

The care center team will help your family prepare for your loved one's stay, as well as provide emotional and spiritual support. Our focus is your loved one's comfort and dignity. We go the extra mile to make sure they have everything needed, including made-to-order meals.

Care you can trust.

We opened Washington state's first stand-alone hospice center in 1984 in Longview. In 2015 we opened a second center in Vancouver. With decades of inpatient experience, you can trust your loved one will get first-class, compassionate care.

Exceptional support every day.

- Regular visits from our medical providers
- Ongoing communication with primary care provider
- Expertise in advanced-symptom management
- Specialized training in the unique needs of dying veterans
- Free assistance with pet care

Close to home.

Like many families, you want your loved one at home during their final journey. When that's not possible, compassionate medical care is close to home at our Longview and Vancouver hospice care centers. Around-the-clock nursing can help keep your loved one comfortable when pain and other symptoms can't be controlled at home.

Why inpatient hospice?

Inpatient hospice provides intense short-term medical attention when your loved one needs frequent monitoring of pain and symptoms like shortness of breath and delirium. Or, your loved one can receive respite care at our centers if their caregiver needs a short-term break.



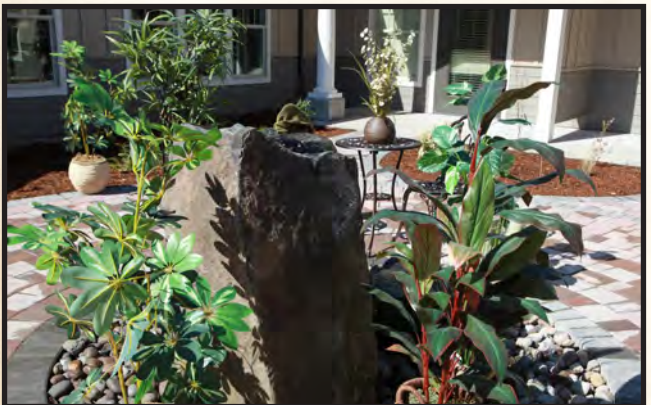
Salmon Creek Hospice Center

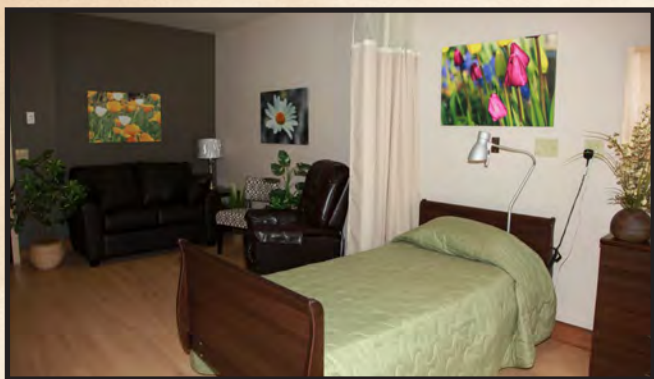


**3102 NE 134th St.
Vancouver, WA 98686
360.597.0711**

For hospice patients needing
intense short-term or respite
care

Patients receive medical attention in
warm, comfortable surroundings in a
new state-of-the-art hospice facility.
The private, 10-bed suites with baths
include individual patios.





Amenities

- Private suites spacious enough to accommodate overnight guests
- Flexible visiting hours including pets
- Family cooking & dining area
- Family room
- Wi-Fi
- Library/reading area
- Chapel
- Courtyard garden
- Memorial garden
- Convenient on-site parking
- RV parking with electrical and water

Nestled in a wooded setting bordered by wetlands, the center offers easy access to I-5 and 205.

